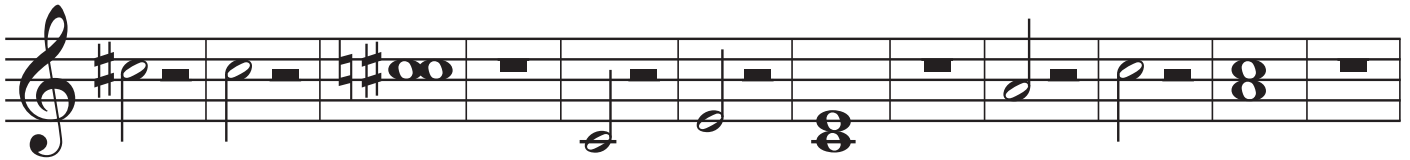
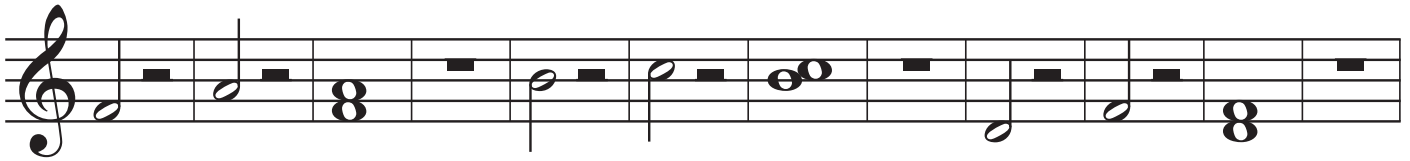
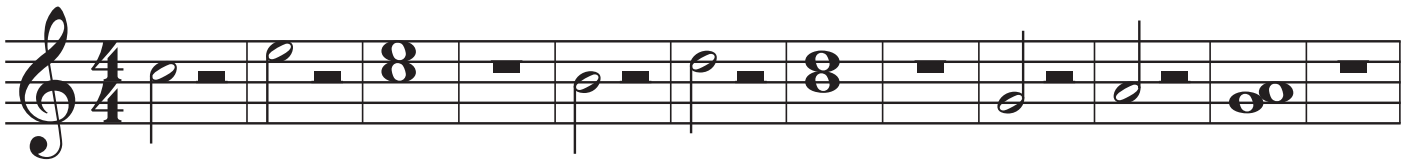


Gemischte Intervalle Prime bis grosse Terz



- 1 = Prime = gleicher Ton
- kl2 = kleine Sekunde 1 Halbton
- gr2 = grosse Sekunde 2 Halbtöne
- kl3 = kleine Terz 3 Halbtöne
- gr3 = grosse Terz 4 Halbtöne

Lösung:

gr3 - kl3 - gr2 - gr3 - kl2 - kl3 - kl2 - gr3 - kl3 - gr3 - gr2 - 1 - kl3 - kl3 - kl2